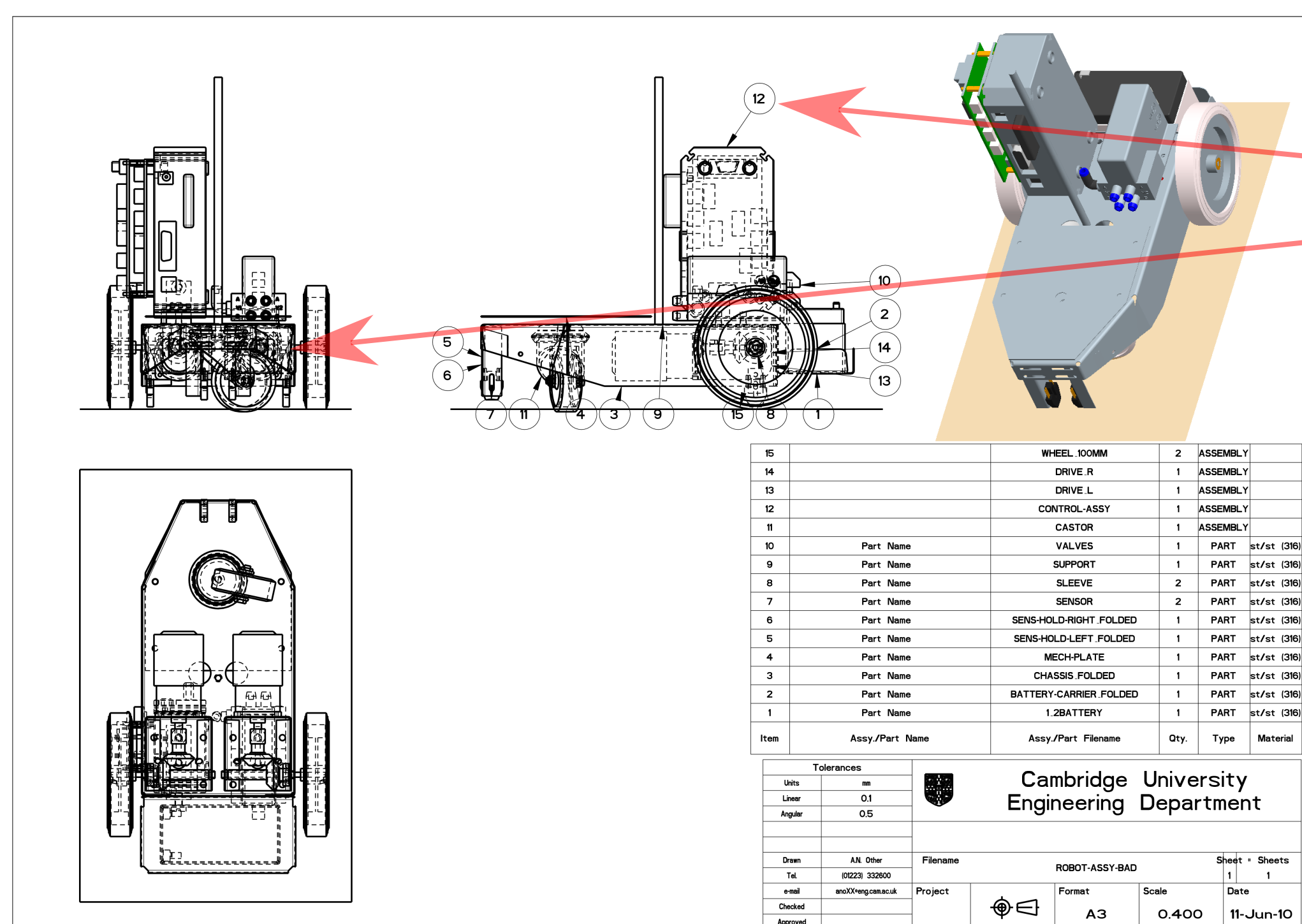


IDP Drawing Standards

for Design Acceptance



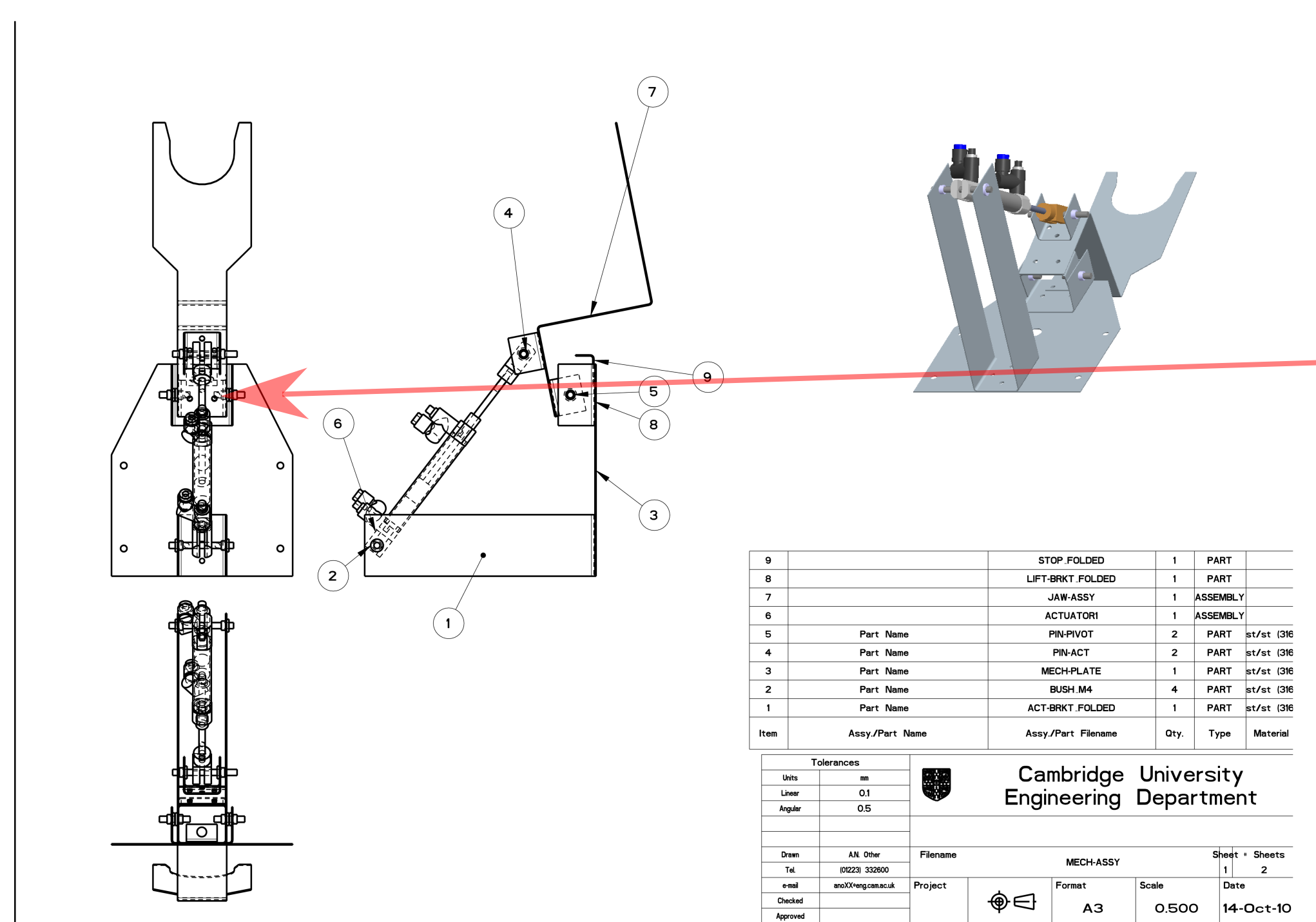
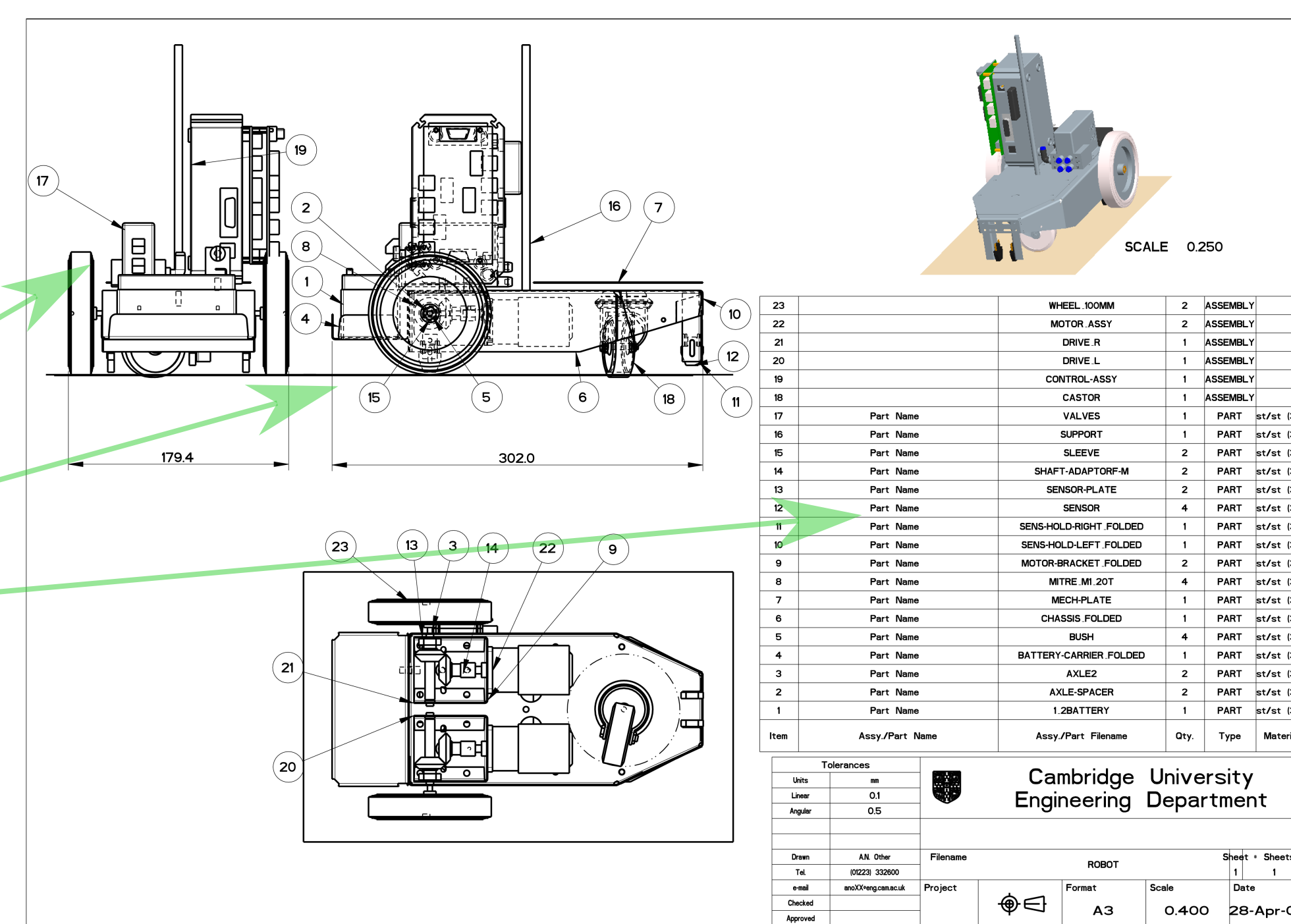
Assembly Drawings

BAD

- Difficult to read BoM balloons
- Difficult to read - (Wireframe display on)

GOOD

- Better use of hidden line plotting option
- Use of floor to check wheel positions
- Cleaner layout of BoM balloons
- Expansion (recursive) display of sub-assy components where appropriate (e.g. not for bought in items)



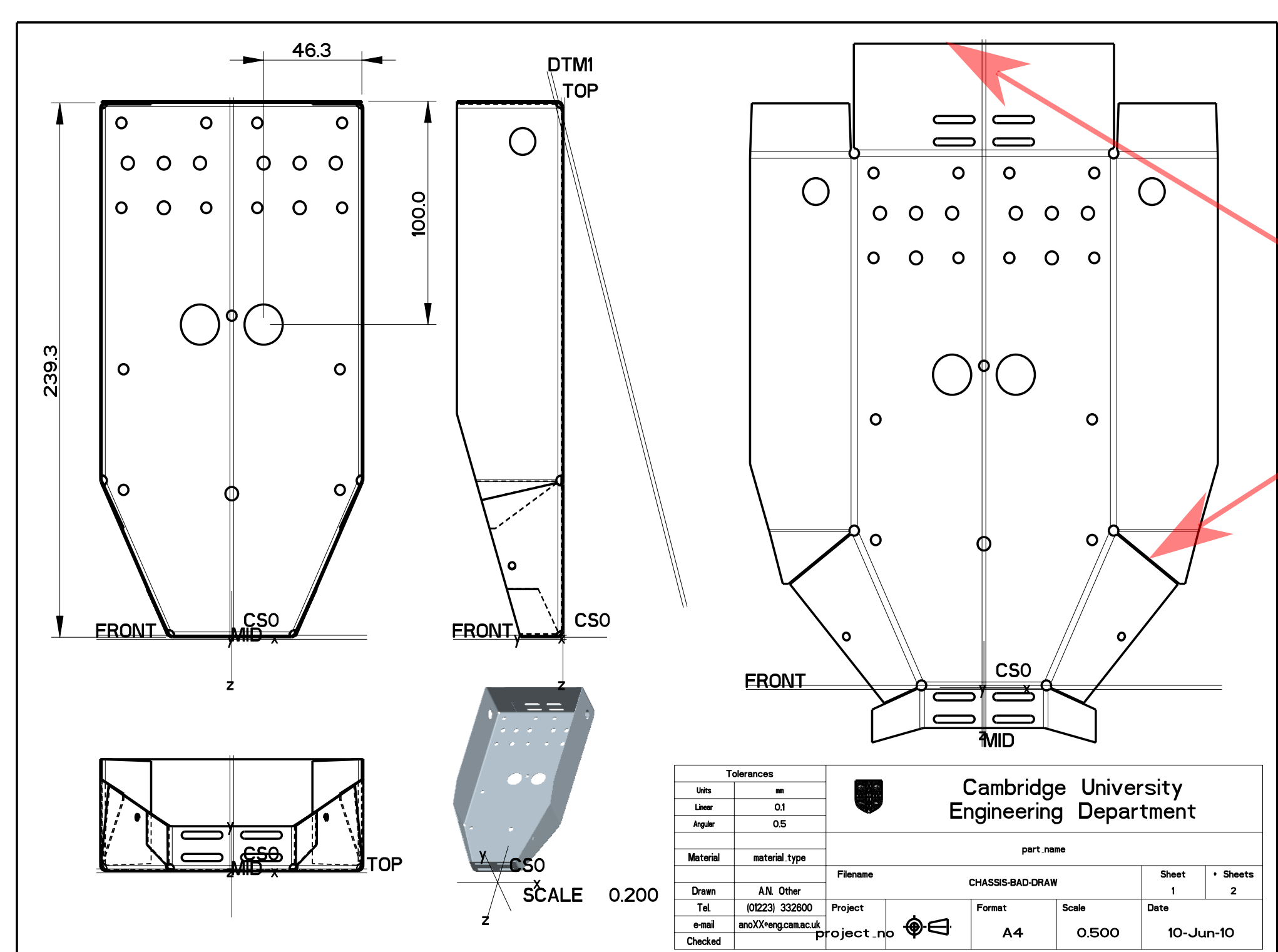
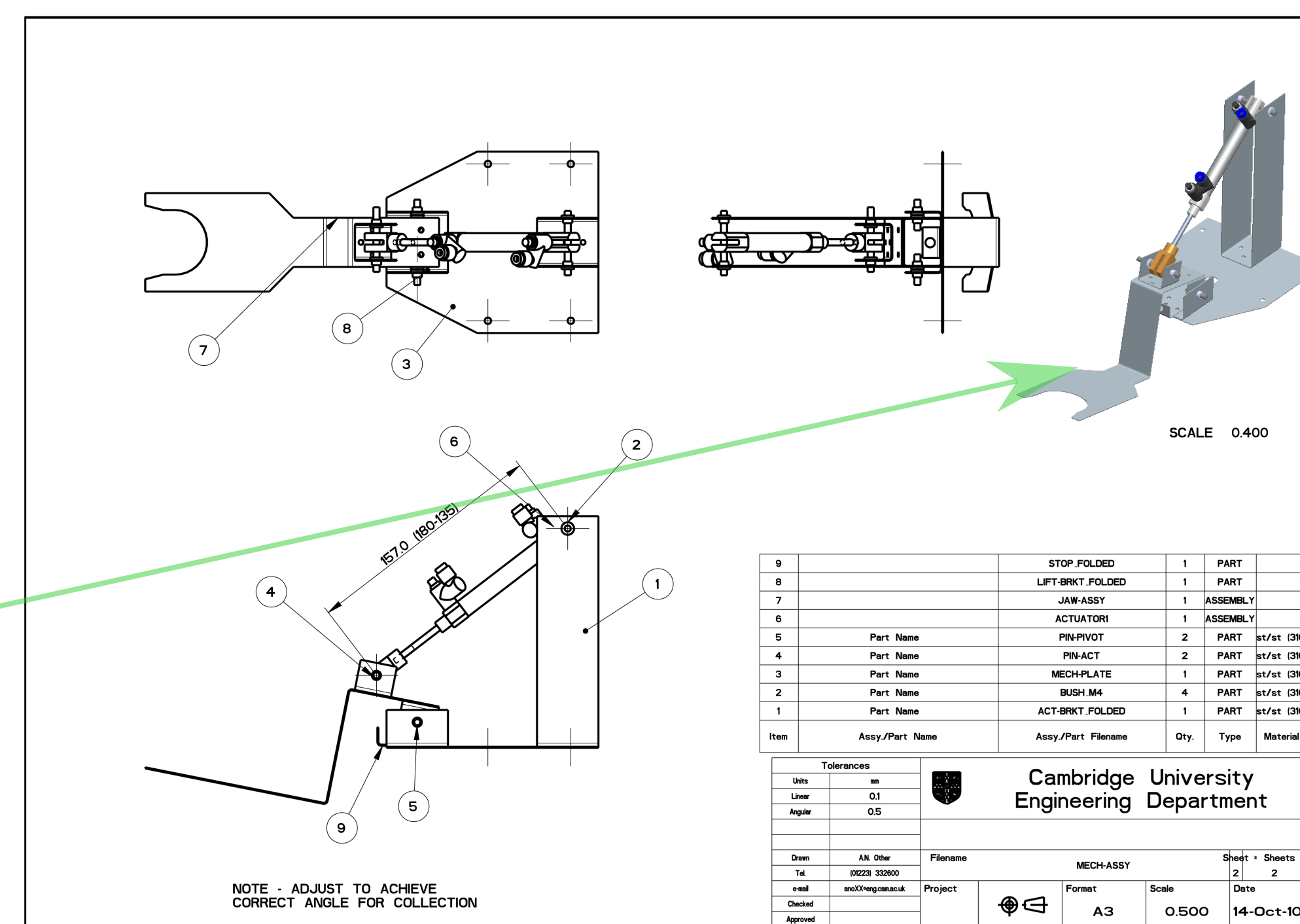
Sub-Assembly Drawings

BAD

- Awkward views
- Hidden-lines not aiding clarity
- CAD Datums still showing

GOOD

- More easily understood views
- Better isometric view



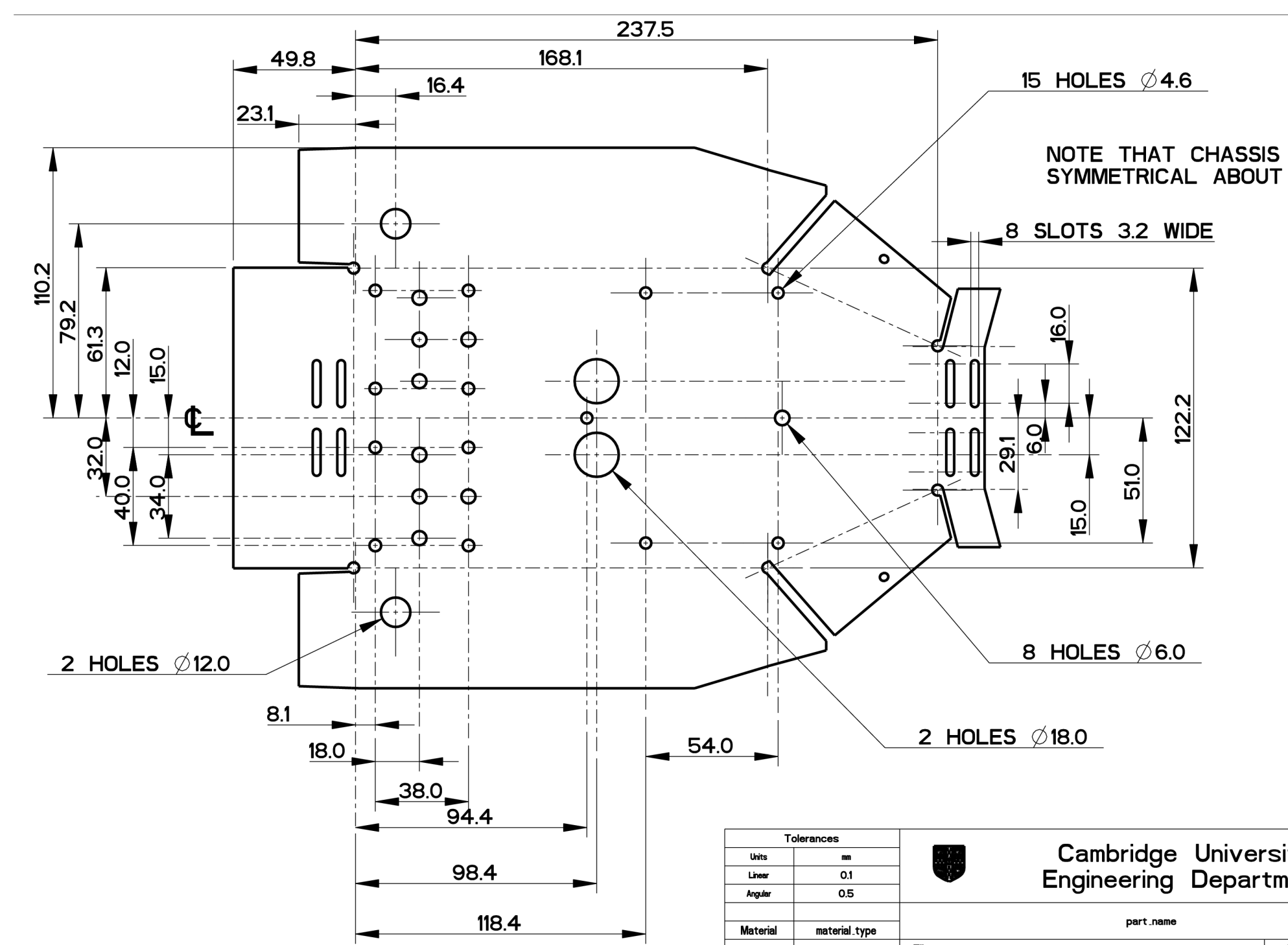
Sheet Metal Drawings

BAD

- No Centerline
- Not enough dimensions to manufacture
- CAD Datums still showing
- Slots too narrow to be cut on water jet

GOOD

- Two sheets (one folded, one flat)
- Fully dimensioned
- Centerlines used to minimise dimensions - aid clarity



DXF Drawings

BAD

- Wasteful of material (3-5mm between components)
- Bend lines left showing (will be cut)
- CAD Datums still showing
- Slots too narrow to be cut on water jet

GOOD

- Good use of material
- No no-cut lines

